

FLATSCAN 27 TECHNICAL SPECIFICATIONS

X-Ray Detector

Type	Linear PIN diode array
Resolution	800 µm, 512 pixels, 40 AWG
Dynamic range	4096 (12-bit)
Scanning area	535 mm x 412 mm / 27" diagonal
Line scan speed	6 m/min to 0.5 m/min
Penetration*1	25mm of Steel (guaranteed with CP120B) 29mm of Steel (typical with CP120B) 30mm of Steel (guaranteed with CP160B) 34mm of Steel (typical with CP160B)
Operating temperature	0 to +40 °C
Survival temperature	-40°C to +80°C
Relative humidity	5 to 95% non condensing
Communication protocols	Wireless 802.11g & Bluetooth
Supply	Self-contained rechargeable cells
Battery life, image capture	70 images on one charge with regular parameters
External dimensions	707 x 623 x 55 mm ³
Weight	9.0 kg

X-Ray Generator

	CP120B	CP160B
Wave form	Constant potential	Constant potential
Maximum kV	120 kV (kV adj.: 40 to 120kV)	160 kV (kV adj.: 40 to 160kV)
Maximum mA	1.5 mA between 40 and 80 kV 1.0 mA between 81 and 120 kV	0.5 mA
Exposure time	adjustable from 1s to 300s	adjustable from 1s to 300s
Pre-warning time	adjustable from 0s to 99s	adjustable from 0s to 99s
Focal spot size	0.8 x 0.5 mm ²	0.8 x 0.7 mm ²
Beam angle	60° x 40°	60° x 40°
Tube life	> 10 years of daily use	> 10 years of daily use
X-ray dose 1 ft	1000 µSv/s	4000 µSv/s
2 batteries (1 spare)	36 V 1300 mAh NiMH	36 V 1300 mAh NiMH
Max. capacity / 1 batt.*2	6 min cont. X-ray generation	6 min cont. X-ray generation
Charger type	Intelligent fast battery charger	Intelligent fast battery charger
Charging time	1h15	1h15
Weight (including battery)	7.7 kg	9.3 kg

Imaging Station

Type	Notebook
Processor	Intel Core Duo T2400 (1,83MHz)
Screen	15.4" WSXGA + LCD Screen
Ram	512MB DDR2 667MHz SDRAM
HDD & DVD Drive	60GB HDD - 24X CD-RW/DVD

Carrying Cases Type

IP66 Hermetic case for X-Ray source & accessories	780 x 520 x 295 mm ³
Backpack for detector daily use	800 x 700 x 100 mm ³
Flycase for detector air transport	840 x 650 x 100 mm ³

Options

Wireless Repeaters	Increased range or non line-of-sight operation
Communication Cable for zero RF emission	Easy to handle (50 m)

*1 Distance between x-ray source and image capt. Unit: 15 cm
*2 Up to 70 images with 15 seconds scanning time at 80 kV - 0.5 mA



ICM
Industrial Control Machines s.a.
Zoning "Les Plenesses"
Rue Léon Crosset
B-4840 Welkenraedt - Belgium

Xspec Technology Sdn Bhd
No. 8 Jalan Industri USJ 1/8, Taman perindustrian USJ1
47600 Subang Jaya, Selangor, Malaysia
Tel: +60 3 8023 1161 Fax: +60 3 8023 1167
Email: inquiry@xspec.com.my
http://www.xspec.com.my

FlatScan 27

The best tool ever for fast threat identification



Flatscan 27 System



FlatScan 27 is a very innovative flat portable battery powered X-ray photodiodes system designed for high-speed and high-resolution inspection tasks. The FlatScan 27 incorporates a state-of-the-art 2D (two dimensional) self-contained robust scanning detector, a Laptop computer and a CP120B or CP160B portable constant potential X-ray generator for real time image processing. Designed in cooperation with specialized EOD teams, its unique features make it perfectly match their specific needs in case of emergency situations.

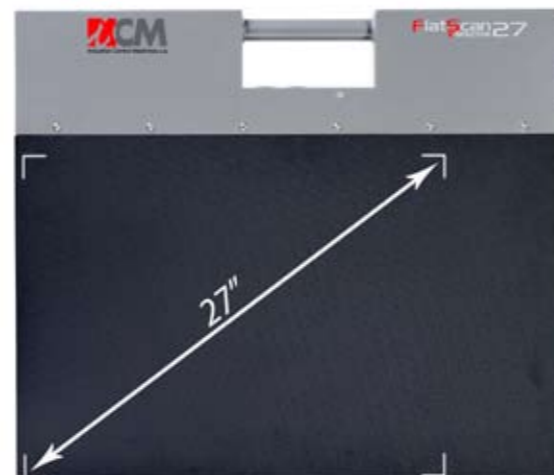
The FlatScan 27 is deployed very easily and quickly in the field for:

- The EOD evaluations of suspicious packages located in public areas (e.g. bombs, arms ...)
- Mobile customs searches (weapons and all illegal substances ...)
- Oversized objects that cannot be scanned in conventional X-Ray machines for airport and customs applications
- Industrial Non destructive testing of complex assemblies (e.g. welds ...)

=> Principally of interest to military, police, prisons, customs applications, quality control & NDT Managers.

Flatscan 27 Detector

Incorporating a large number of unique technological features, the FlatScan 27 provides a versatile and a very thin detector (thickness of 55mm), which enables objects to be scanned even if they are located in very tight places (e.g. close to a wall...). As well, the FlatScan 27 provides an impressive image quality with a high penetration capability (up to 34 mm of steel at 160kV, 0.5mA), thanks to its sensitivity, to the 800 microns resolution and to the possibility to slow down the speed of the scanning detector.



CP120B & CP160B X-Ray Generators

The CP120B & the CP160B are the most advanced battery powered portable X-ray generators available on the market. Powered by a 36Vdc battery, their constant potential output produces a stable, penetrating and contrast-rich beam. The mini focal spot makes up to 5 times magnification possible without loss of image sharpness.

Because the kV and mA of the Constant Potential series can be regulated, the right quality of X-rays and the correct dose can be selected to suit each, individual suspect item. The wide beam angle allows the generator to be placed very close to the image capture unit, thereby increasing the effective penetration capability of the system as a whole.



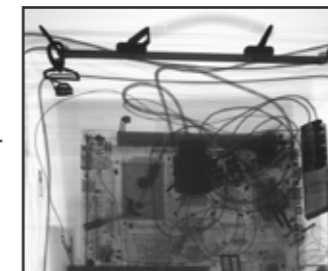
CP120B



CP160B

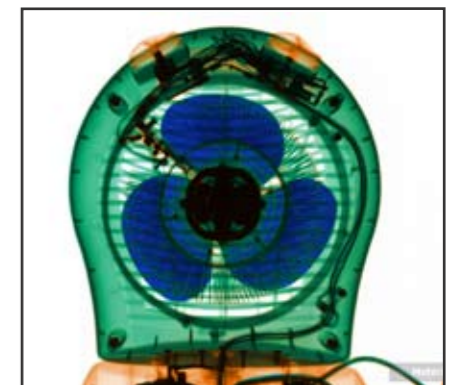
Software

The operator can select all the standard following processing operations: reverse black & white, pseudo colour, zoom, pan, deep focus, histogram, an extraordinary contrast stretch mode, low battery alarm and most useful, the possibility to change all parameters of the CP120B & CP160B for progressive depth penetration studies.



Materials Separation

The FlatScan technology can be extended with a variety of options including materials separation, where a package is colour-coded to indicate whether components within the package are organic or inorganic in nature. This option facilitates the operator when making a valued decision on the contents of suspect objects or packages.



Fast Battery Charger

The fast battery charger charges one battery in 1 hour, optimizes the charge, protects the batteries and extends their lifetime.

Carrying cases

For fast on site intervention, the FlatScan 27 detector is transportable in a backpack while all accessories are stored in an intelligent IP66 carrying case.

For overseas shipments, the detector in its backpack fits in a robust flight case.